



THE KEY DATA BEHIND MODELS & CASTING EVOLUTION

TAGWALK
THE FASHION SEARCH ENGINE

AGENDA

- **NOTABLE MODEL INITIATIVES**

AGE FREE MODELS

CURVY MODELS

NON-BINARY MODELS

FOCUS ON THE VALENTINO CASTING

- **MODELS WHO WALKED THE MOST**

WOMENSWEAR

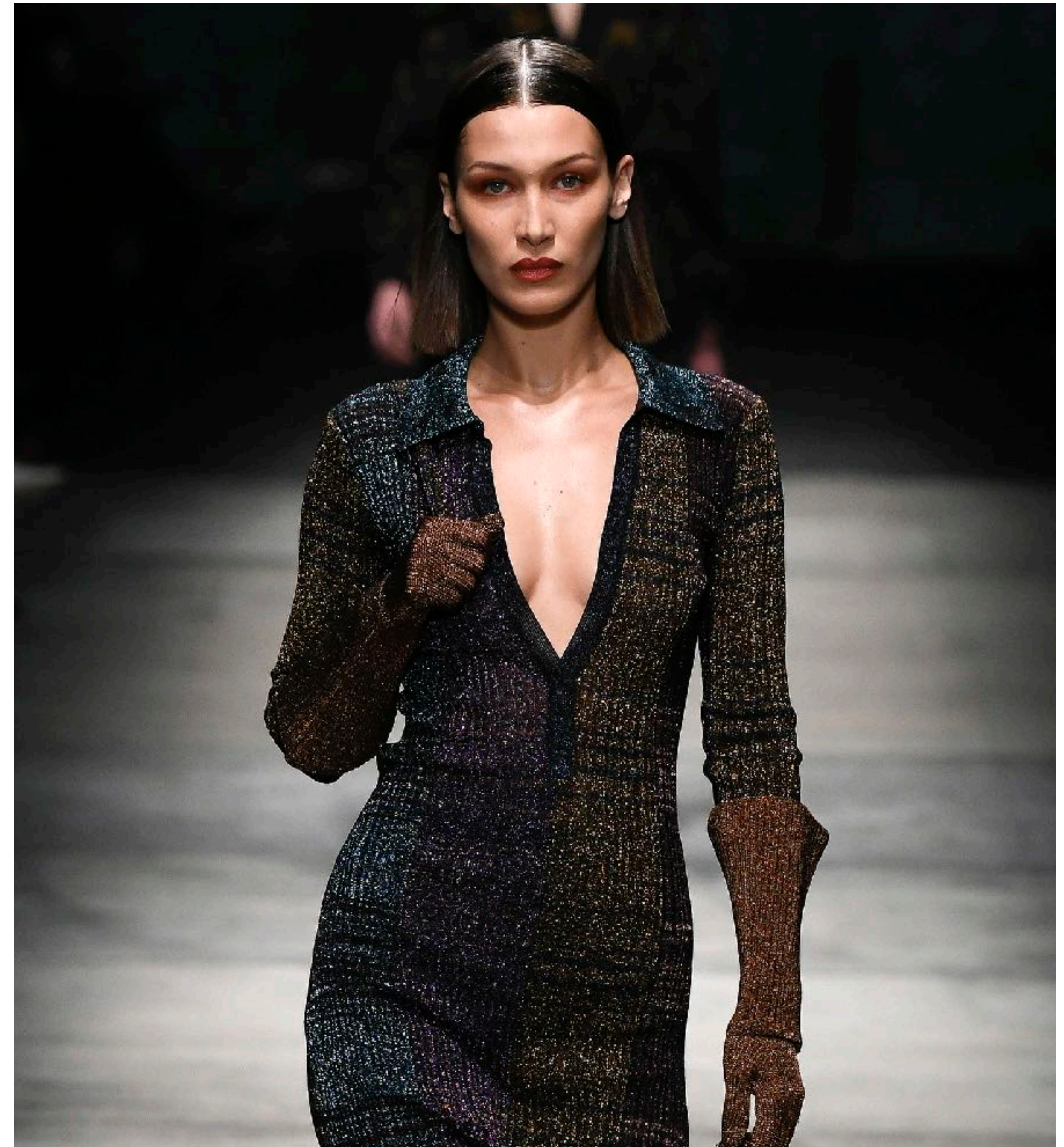
FOCUS ON BELLA

MENSWEAR

- **UPCOMING MODELS**

WOMENSWEAR

MENSWEAR



INTRODUCTION

TAGWALK HAS BEEN REFERENCING MODELS FROM FASHION SHOWS SINCE ITS BEGINNING AND HAS A DEDICATED SECTION CALLED **TAG MODELS**, A DATABASE SYSTEM THAT REGISTERS NEW FACES AS WELL AS MODELS WHO WALKED THE MOST SHOWS.

4155

DIFFERENT MODELS ARE
LISTED ON TAGWALK

1314

DIFFERENT MODELS WALKED THE
F/W2020 WOMENSWEAR RUNWAYS.

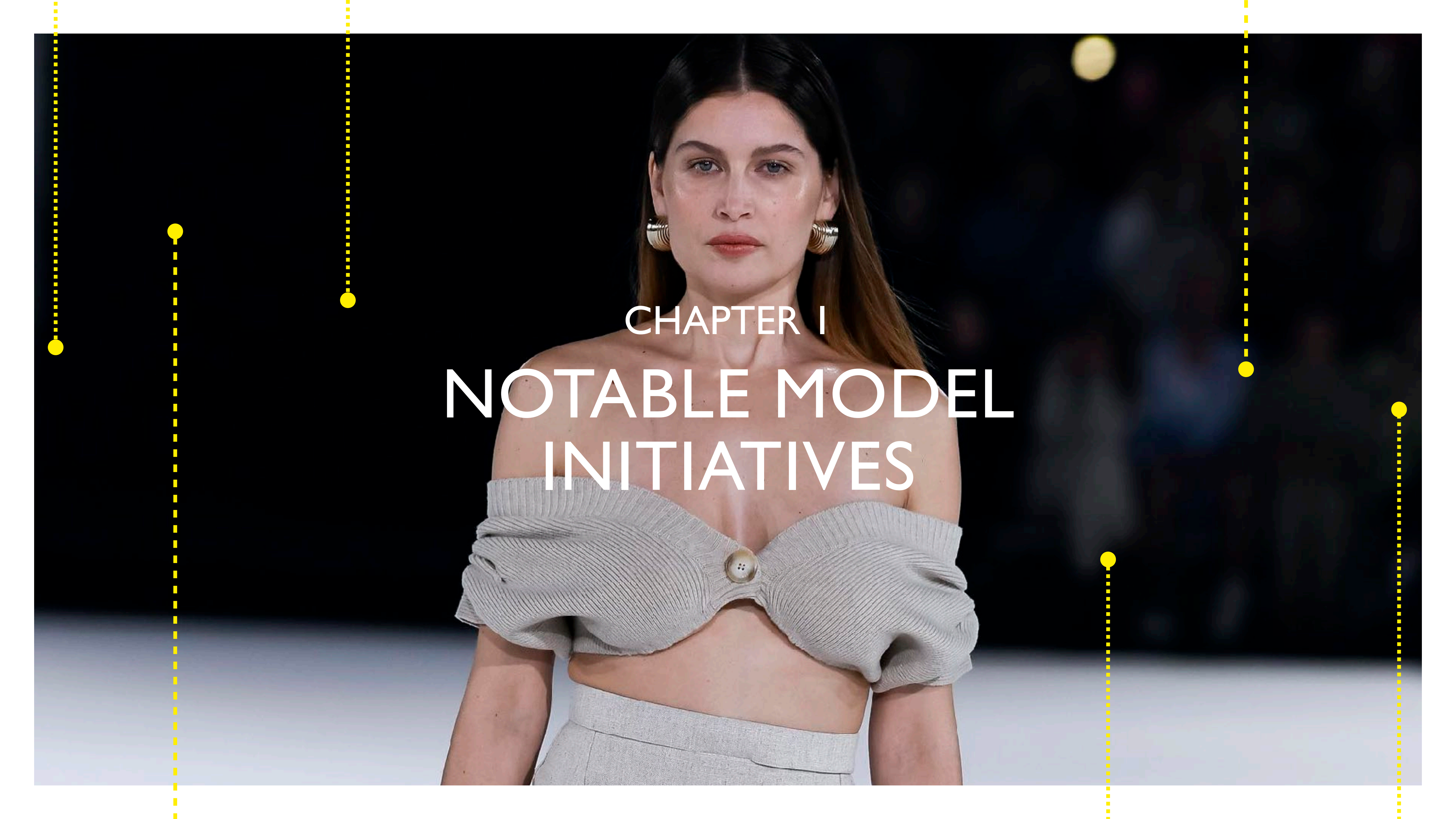
WE BELIEVE THAT MODELS HAVE A KEY PLACE IN THE INDUSTRY, **THE EMBODIMENT OF THE GARMENT BEING JUST AS IMPORTANT AS THE GARMENT ITSELF.**

IN RECENT SEASONS, CASTINGS HAVE EXPRESSED MORE DIVERSITY IN THEIR SELECTIONS, AN INITIATIVE WE WANT TO HIGHLIGHT BASED ON SIZE, AGE, GENDER AND NATIONALITY.

THESE FACTORS REINFORCE AND PROVE THAT THERE IS NOT JUST ONE STANDARD FOR BEAUTY, BUT A MULTITUDE.

THIS NEWSLETTER PRESENTS A SELECTION OF INITIATIVES OVER THE LAST FASHION WEEK OF FALL/WINTER 2020, AS WELL AS A SELECTION OF 10 NEW MODELS WHO WALKED THE MOST SHOWS.





CHAPTER I NOTABLE MODEL INITIATIVES



BOSS - F/W2020

FOCUS ON AGE-FREE MODELS

43
SHOWS

INCLUDED MODELS
OVER 30 IN FW20
VS 41 IN SS20 (+4.8%)

41
MODELS
OVER 30

HAVE WALKED FOR FW20
VS **30 FOR SS20.**

6 MODELS OVER 30 WHO WALKED THE MOST

FALL/WINTER 2020



IRINA SHAYK
8 SHOWS



CAROLYN MURPHY
7 SHOWS



MARIACARLA
BOSCONO
6 SHOWS



DOUTZEN KROES
5 SHOWS



SASKIA DE BRAUW
5 SHOWS

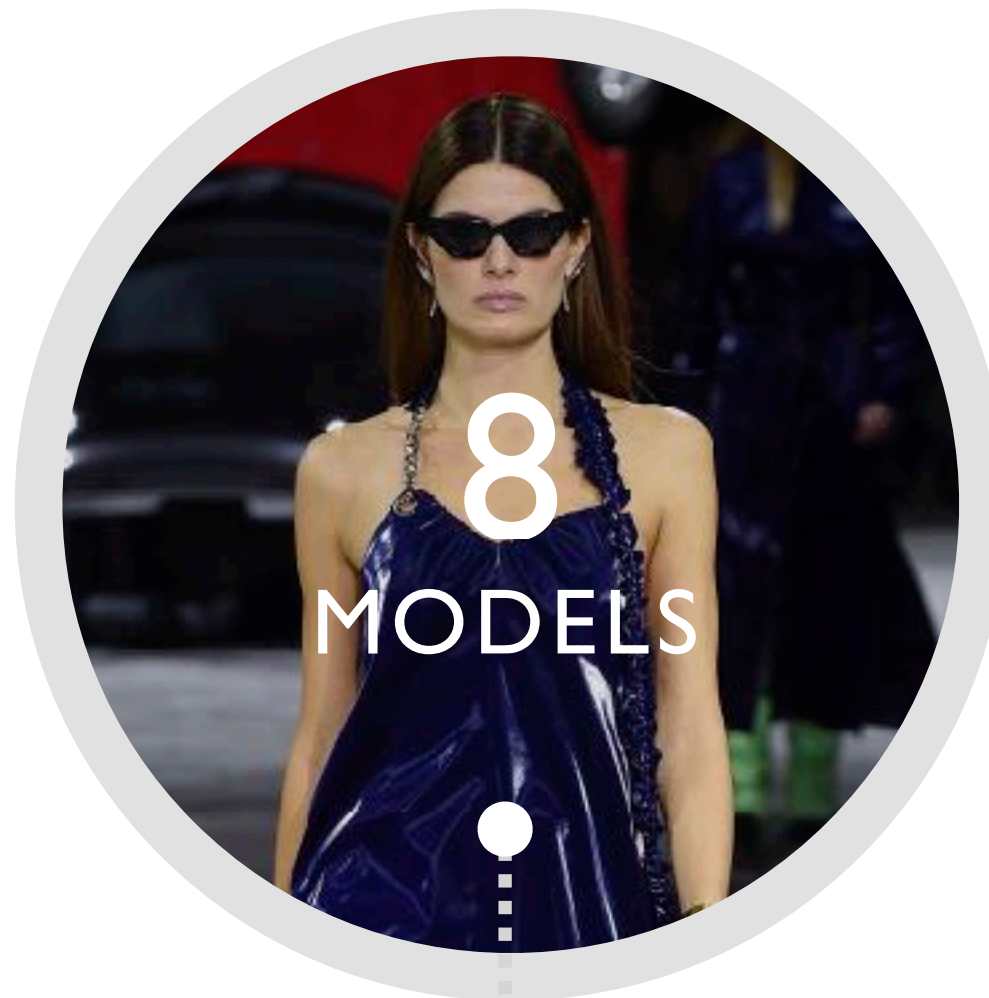


DEBRA SHAW
5 SHOWS

3 SHOWS WITH THE MOST MODELS OVER 30

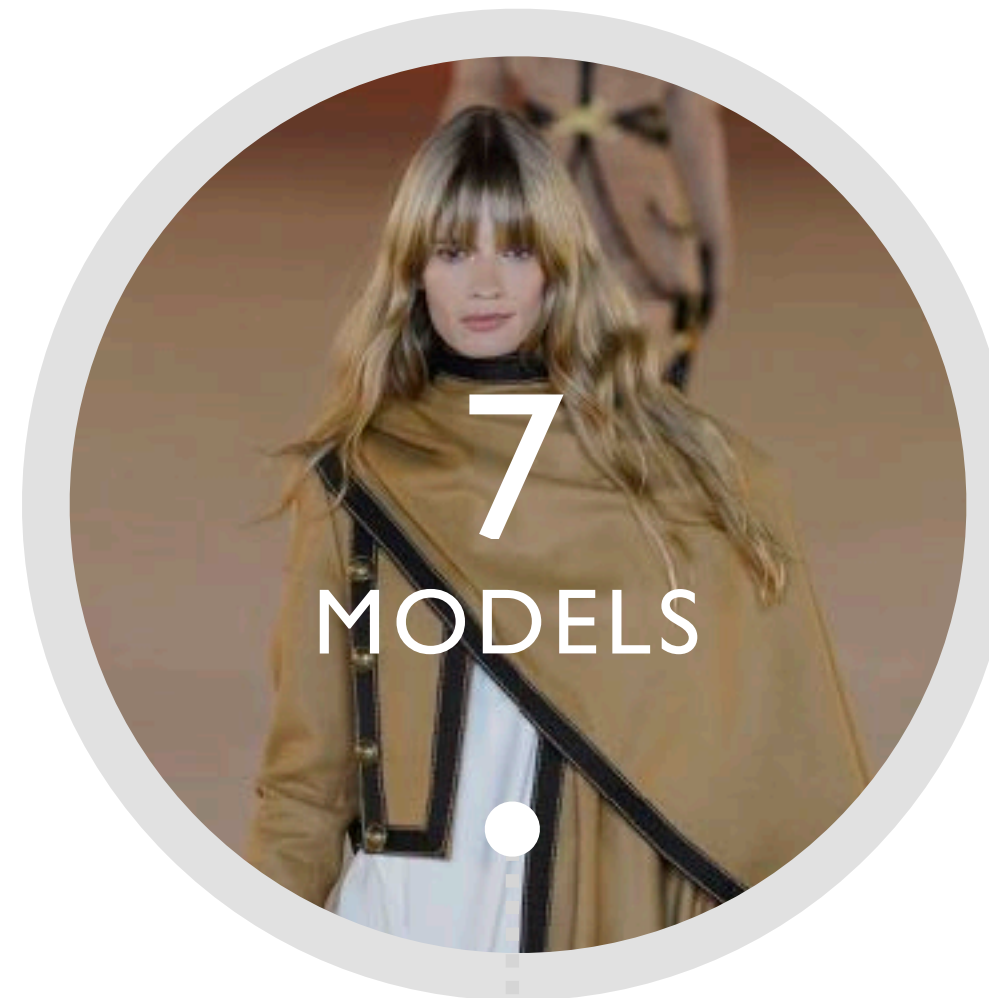
FALL/WINTER 2020

OFF-WHITE



MARIACARLA BOSCONO
DEBRA SHAW
CAROLYN MURPHY
NOÉMIE LENOIR
YOLANDA HADID
INGUNA BUTANE
ISABELI FONTANA
GEORGINA GRENVILLE

BALMAIN



LIYA KEBEDE
JULIA STEGNER
CAROLINE RIBEIRO
ERIN WASSON
HELENA CHRISTENSEN
ESTHER CANADAS
HANNE GABY ODIELE

SALVATORE FERRAGAMO



CAROLYN MURPHY
CAROLINE TRENTINI
IRINA SHAYK
ARIZONA MUSE
ANNA VYALITSYNA
SASKIA DE BRAUW
DOUTZEN KROES



JACQUEMUS - F/W2020

FOCUS ON CURVY MODELS

19
SHOWS

INCLUDED CURVY MODELS
IN FW20 VS 16 IN SS20:
+18,8%.

16
CURVY
MODELS

WALKED FOR FW20,
VS 15 FOR SS20.

FASHION SHOW WHICH INCLUDED CURVY MODELS IN
THEIR CASTINGS FOR THE 1ST TIME:
FENDI (PALOMA ESLESSER, JILL KORTLEVE), **CHANEL**
(JILL KORTLEVE), AND **LANVIN** (PALOMA ESLESSER).

THE 3 CURVY MODELS WHO WALKED THE MOST SHOWS



JILL KORTLEVE
9 SHOWS



PALOMA ELSESSER
4 SHOWS



TESS MCMILLAN
4 SHOWS

FOCUS ON CHRISTIAN SIRIANO

CHRISTIAN SIRIANO IS THE DESIGNER THAT HAS ALWAYS INCLUDED DIFFERENT BODY TYPES FOR ALL HIS SHOWS, INCLUDING SEVERAL CURVY MODELS IN ALL ITS CASTINGS.



FALL/WINTER 2020
LOOK 9



SPRING/SUMMER 2020
LOOK 44



FALL/WINTER 2019
LOOK 57



SPRING/SUMMER 2019
LOOK 7



FALL/WINTER 2018
LOOK 1



FOCUS ON NON-BINARY MODELS

32
SHOWS

INCLUDING **LGBTQ+**
MODELS IN FW20 AND 28
IN SS20: **+14,3%.**

15
MODELS

WALKED FOR FW20 AND 15
WALKED FOR SS20.

THE MODEL WHO WALKED THE MOST SHOWS

NON-BINARY



BO GEBRUEERS
8 SHOWS

INTERSEX MODEL



HANNE GABY ODIELE
7 SHOWS

NON-BINARY



NOAH CARLOS
6 SHOWS



FOCUS ON THE VALENTINO CASTING

CASTING BY PATRIZIA PILOTTI

MALE MODELS IN A WOMENSWEAR SHOW

VALENTINO FALL/WINTER 2020 RUNWAY SHOW PRESENTED A STRONG CASTING:
FOR THE 1ST TIME, MALE MODELS WALKED DURING A WOMENSWEAR SHOW



LÉON DAME
LOOK 19



JACOB LEPP
LOOK 63



JEREMIAH BERKO FOU DJOUR
LOOK 61



FRANS VAN DER GLUGT
LOOK 13



JONAS GLÖER
LOOK 67

TRANSGENDER MODELS



KAI-ISAIAH JAMAL (ALSO POET
AND TRANSACTIVIST)
LOOK 19



KROW KIAN
LOOK 63



FINN BUCHANNAN
LOOK 61



JUNO MITCHELL
LOOK 13

7 MODELS ABOVE 30

SASKIA DE BRAUW, IRINA SHAYK, ANJA RUBIK, HANNELORE KNUTS,
LARA STONE, NATASHA POLY, MARIACARLA BOSCONO



ANJA RUBIK
LOOK 57



HANNELORE KNUTS
LOOK 22



LARA STONE
LOOK 54



NATASHA POLY
LOOK 64

CURVY MODELS

THE CURVED MODEL JILL KORTLEVE WAS PART OF THE SHOW AS WELL.



JILL KORTLEVE
LOOK 5

OPENING & CLOSING

THE SHOW WAS OPENED BY THE NEW FACE VIKTORIA LULKO AND CLOSED BY ADUT AKECH, FACE OF THE HOUSE.



VIKTORIA LULKO
LOOK 1



ADUT AKECH
LOOK 89



CHAPTER 2

MODELS WHO WALKED THE MOST



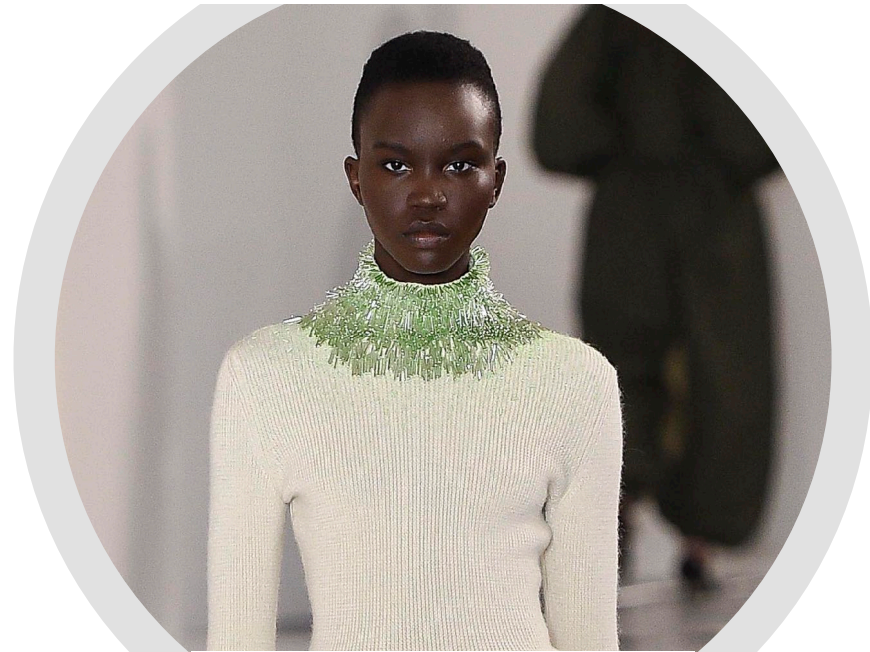
JIL SANDER - F/W2020

FOCUS ON
WOMENSWEAR
F/W2020

10 MODELS WHO WALKED THE MOST

ACHENRIN MADIT

USA



38 SHOWS

LARA MULLEN

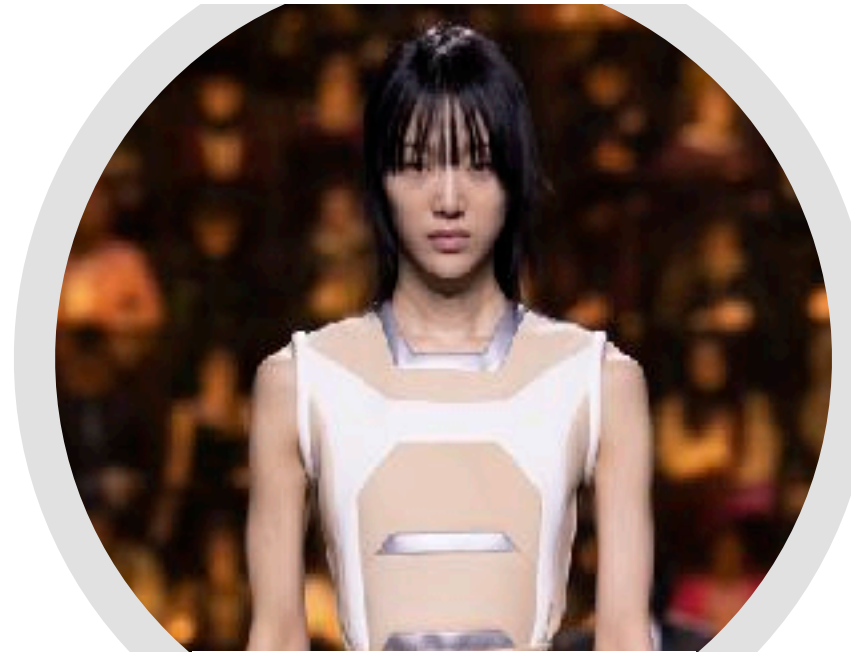
UK



37 SHOWS

SORA CHOI

SOUTH KOREA



36 SHOWS

HANNAH MOTLER

UK



36 SHOWS

FELICE NOORDHOF

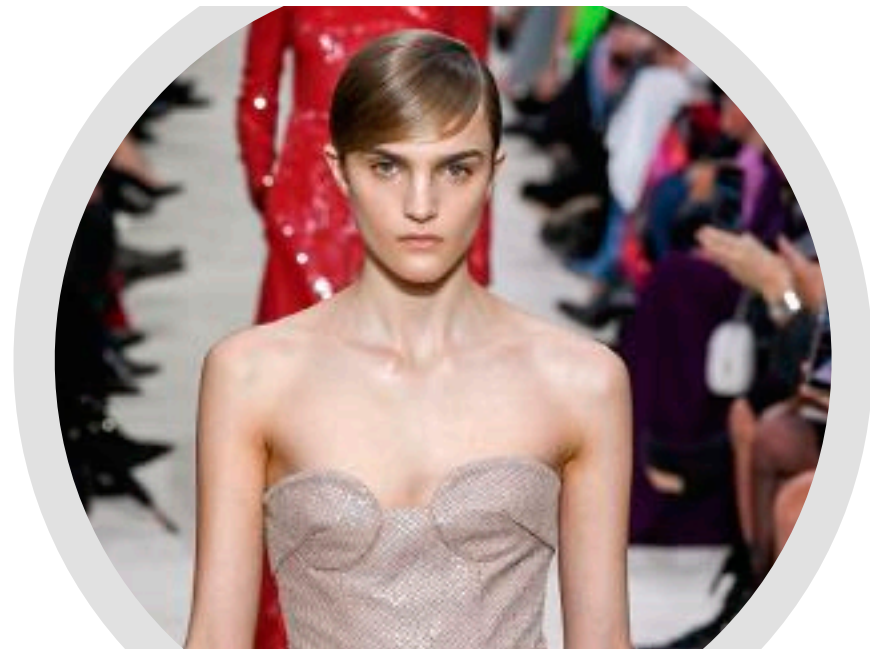
THE NETHERLANDS



36 SHOWS

JOSEFIN LYNDERUP

DENMARK



35 SHOWS

CYRIELLE LALANDE

FRANCE



35 SHOWS

YILAN HUA

CHINA



34 SHOWS

TANG HE

CHINA



34 SHOWS

RACHEL MARX

GERMANY



32 SHOWS



BURBERRY - F/W2020

FOCUS ON
BELLA HADID
F/W2020

BELLA WAS THE MODEL WHO OPENED THE MOST SHOWS

5 IN TOTAL IN F/W2020



LACOSTE
LOOK 01



OFF-WHITE
LOOK 01



RODARTE
LOOK 01



KAHITE
LOOK 01



OSCAR DE LA RENTA
LOOK 01

AND THE MODEL WHO CLOSED THE MOST SHOWS

4 IN TOTAL IN F/W2020



ANDREAS KRONTHALER FOR
VIVIENNE WESTWOOD
LOOK 50



MUGLER
LOOK 32



ALBERTA FERRETTI
LOOK 52



OSCAR DE LA RENTA
LOOK 51



FENDI - F/W2020

FOCUS ON
MENSWEAR
F/W 2020

10 MODELS WHO WALKED THE MOST

MALICK BODIAN

SENEGAL



22 SHOWS

XU MEEN

SOUTH KOREA



17 SHOWS

SERIGNE LAM

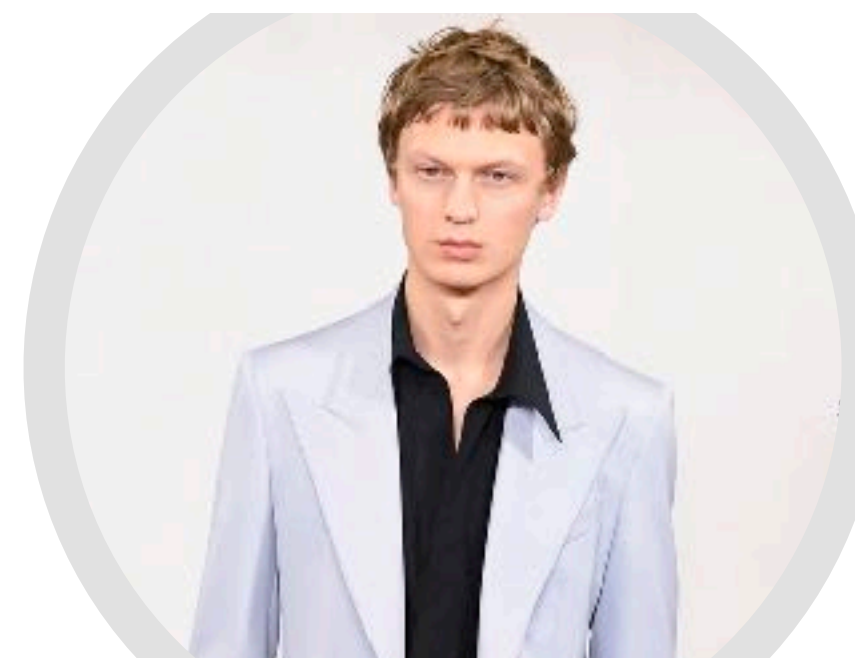
SENEGAL



16 SHOWS

JONAS GLÖER

GERMANY



16 SHOWS

ALEXANDER GUDMUNSOON

ICELAND



16 SHOWS

FERNANDO LINDEZ

SPAIN



15 SHOWS

RISHI ROBIN

SRI LANKA



14 SHOWS

LÉON DAME

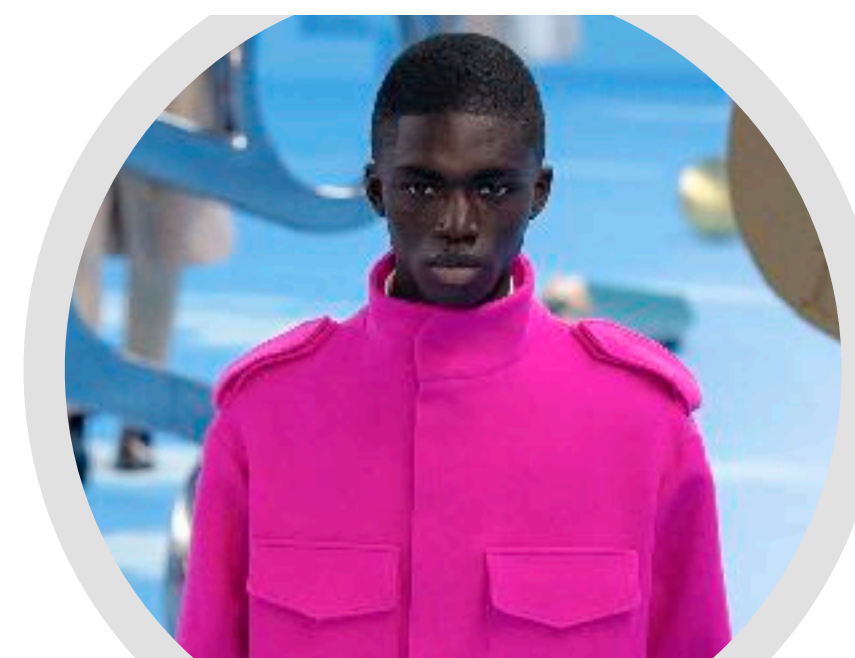
GERMANY



14 SHOWS

JEREMIAH FOURDJOUR

ITALY, GHANA



14 SHOWS

JERANIMO VAN RUSSEL

THE NETHERLANDS



14 SHOWS



CHAPTER 3

UPCOMING MODELS

TOP 10 UPCOMING WOMEN

ALLANA SANTOS

BRAZIL



1ST SHOW
JW ANDERSON

MADELEINE FISCHER

GERMANY



1ST SHOW
PRADA

HOLY FISCHER

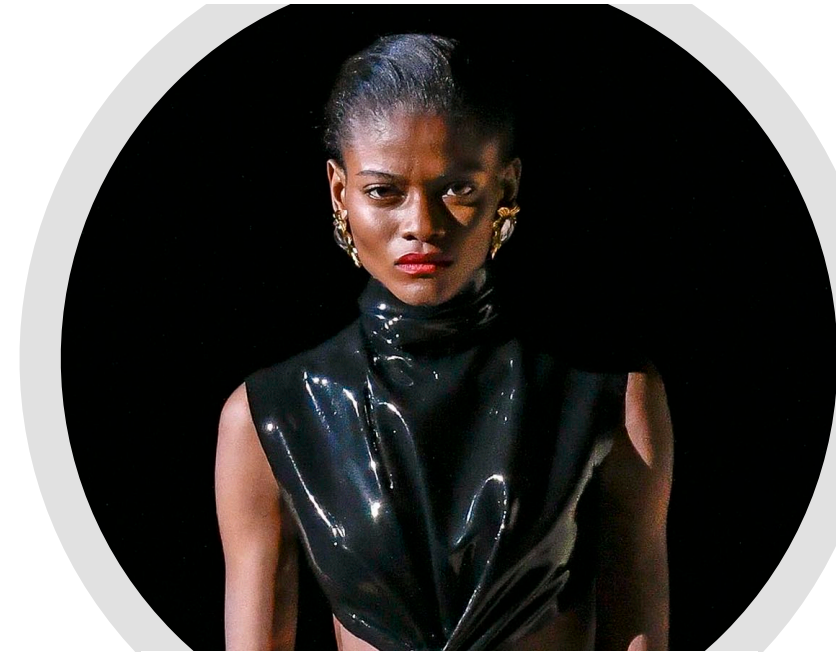
UK



1ST SHOW
JW ANDERSON

BLESSING ORJI

NIGERIA



1ST SHOW
SAINT LAURENT

GRACE CLOVER

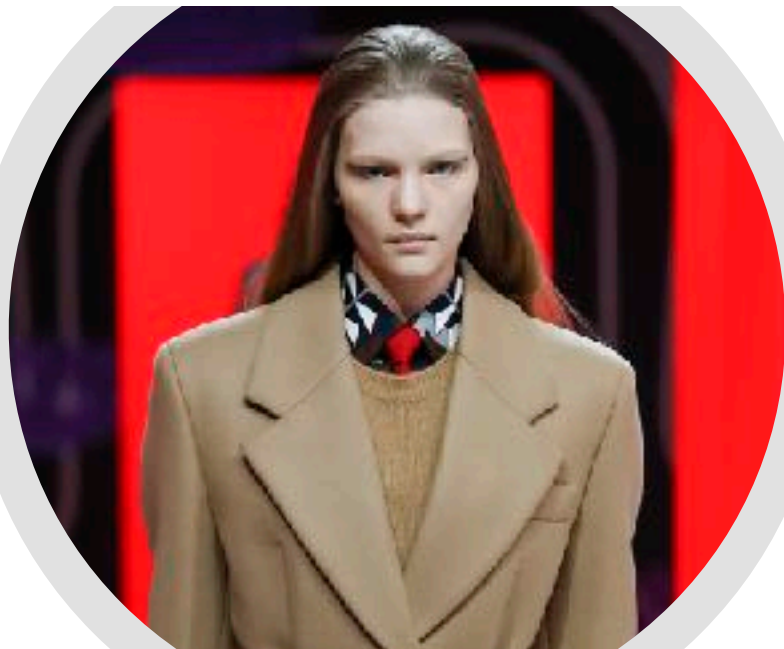
UK



1ST SHOW
JW ANDERSON

VIKTORIA LULKO

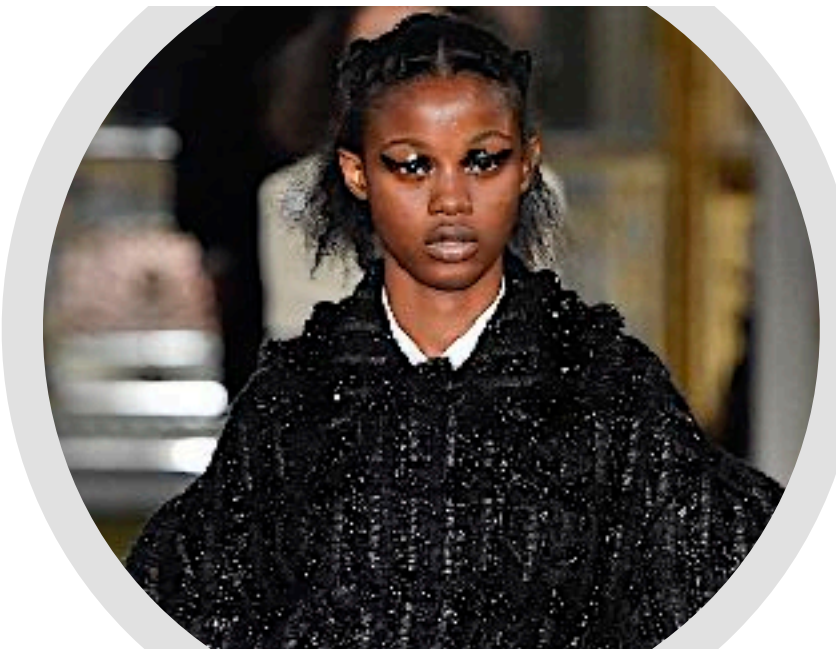
UKRAINE



1ST SHOW
PRADA

PRECIOUS KEVIN

NIGERIA



1ST SHOW
SIMONE ROCHA

JUSTINA AGEITOS

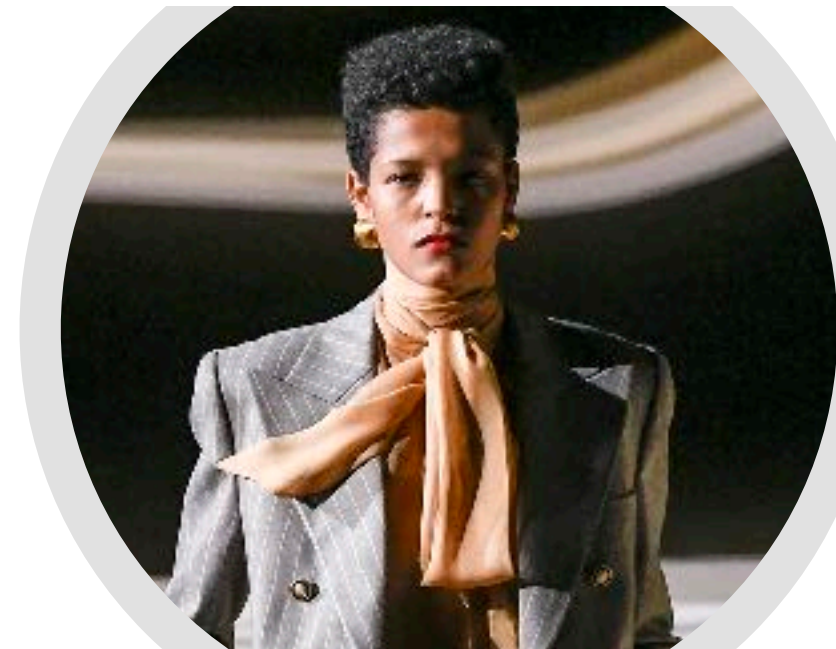
ARGENTINA



1ST SHOW
VICTORIA BECKHAM

LAIZA MOURA

BRAZIL



1ST SHOW
SAINT LAURENT

ALEXIA DE JESUS

BRAZIL



1ST SHOW
PRADA

TOP 10 UPCOMING MEN

ADAMU BULUS

NIGERIA



IST SHOW
PRADA

MOHAMED MEWALGA

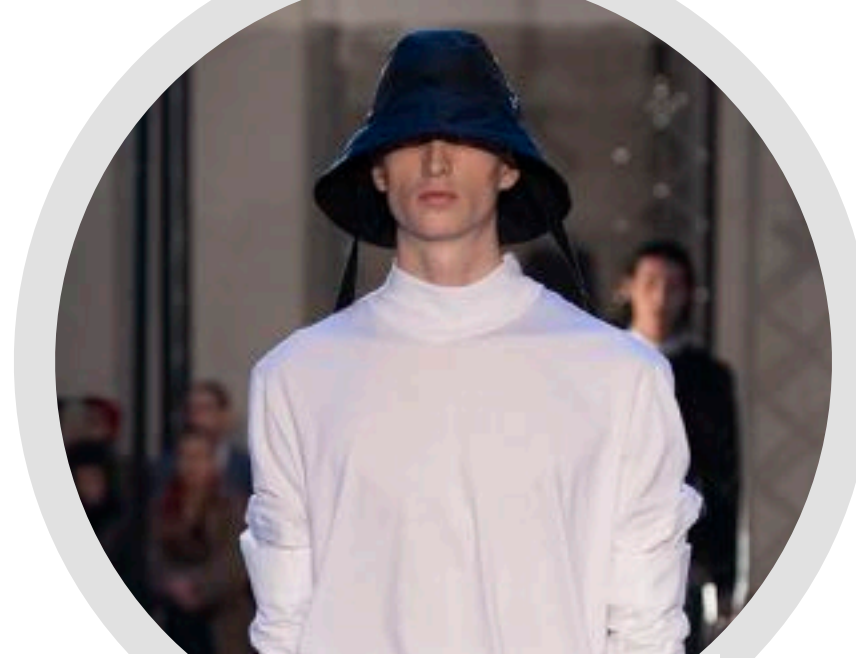
NIGERIA



IST SHOW
JIL SANDER

DELTA VAN MELLE

NETHERLANDS, SWITZERLAND



IST SHOW
NO 21

BANGALI DRAMMEH

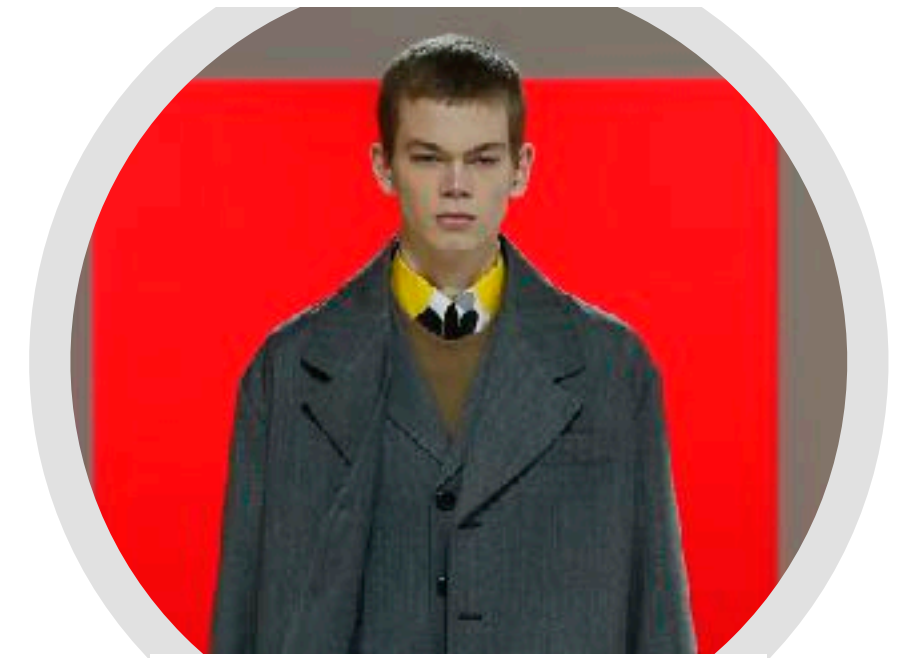
GAMBIA



IST SHOW
SAINT LAURENT

JACOB LEPP

CANADA



IST SHOW
PRADA

KONG SHENGHAO

CHINA



IST SHOW
PRADA

KLEVIN AMANKWAH

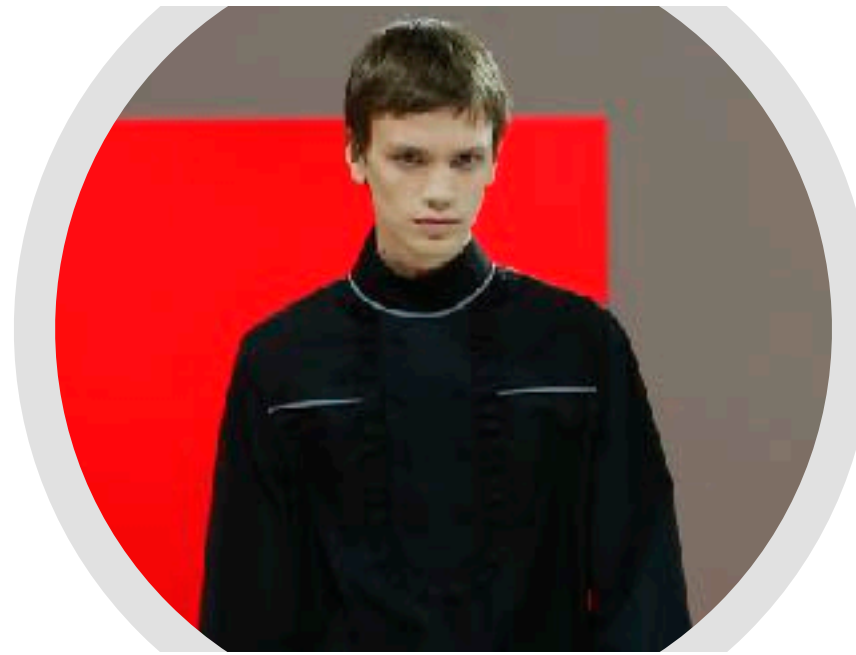
GHANA



IST SHOW
JW ANDERSON

JONAS VERMEYLEN

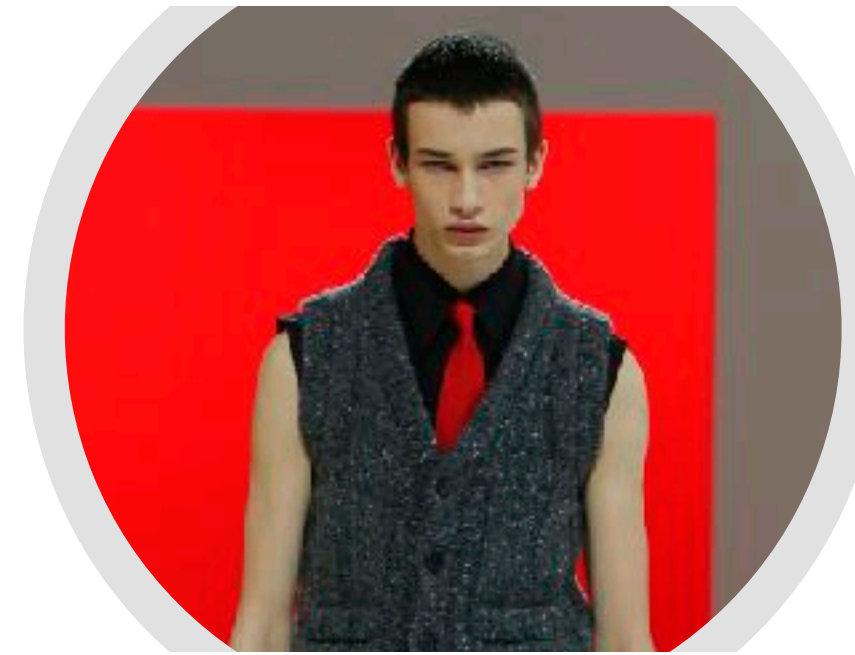
BELGIUM



IST SHOW
PRADA

LOUIS DERCON

NETHERLANDS



IST SHOW
PRADA

JETHRO SAPON

UK



IST SHOW
QASIMI



THANK YOU!

INFO@TAG-WALK.COM